

# Planning Department Quarterly Update

Past quarter highlights

Next quarter “rocks”

# Past Quarter Highlights

- Updated application fee schedule in coordination with City of Lincoln budget process
- Participated in the County's strategic planning effort
- Work on Special Permit section overhaul
  - Continuing work on three special permits requiring additional regulations
- Text amendment to add language to rescind a special permit approved
- Tracking potential wind energy project
  - No recent activity

# What else happened?

## County Jurisdiction

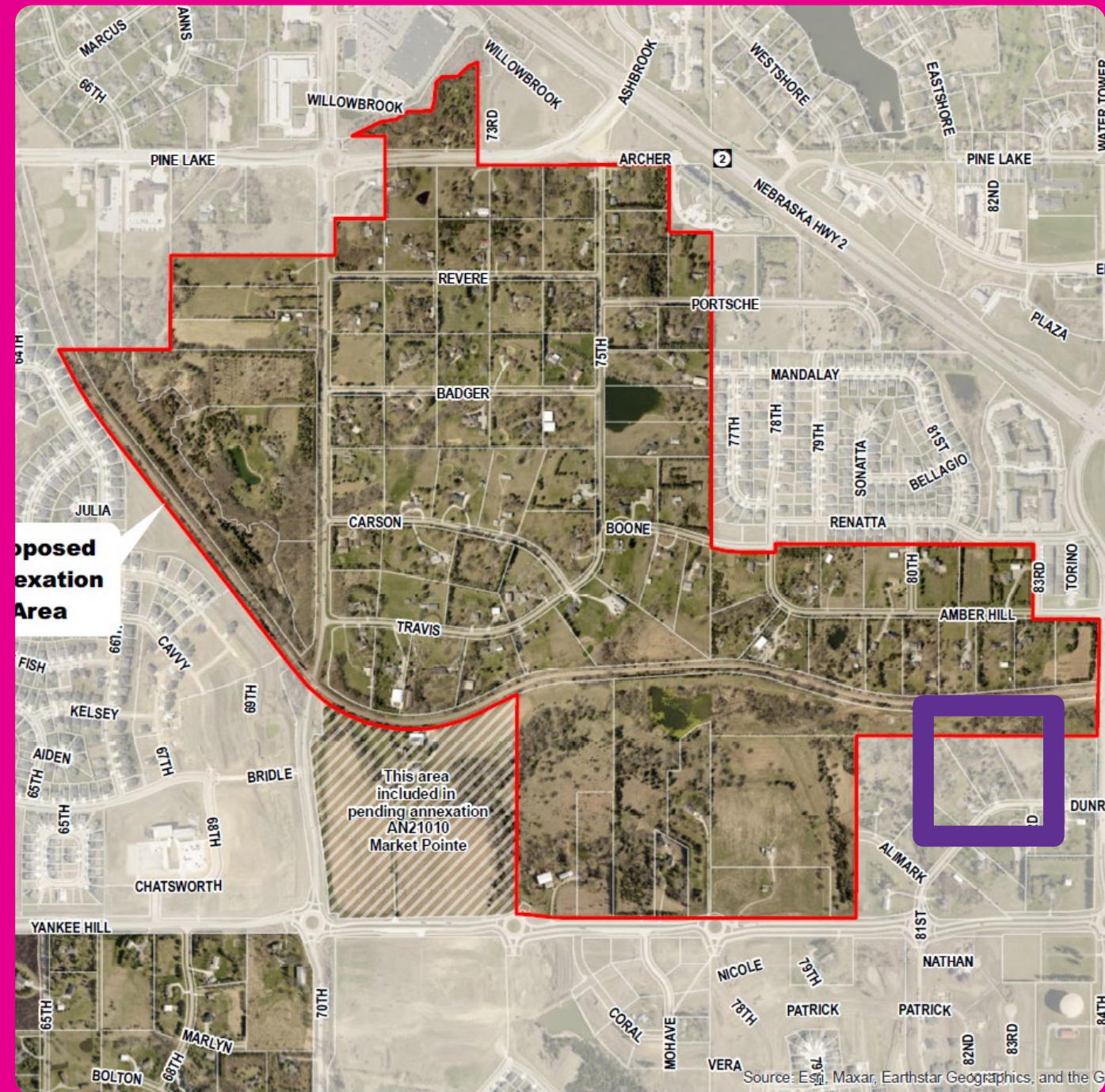
- 4 final plats
- 1 CUP for 9 lots at Highway 77 and Stagecoach RD; at PC on 9-7
- 1 CUP to add one lot to an existing CUP at NW 27<sup>th</sup> St and W. Masek Drive; at PC on 9-21
- 1 Special Permit for a wedding venue at 7600 Panama Road; approved by PC on 8-24

## In 3-mile

- 1 CUP for 10 lots at SW 70<sup>th</sup> and W. Van Dorn; at PC on 9-21
- 1 CUP for 7 lots at SW 27<sup>th</sup> and south of W. Denton Road; south of The Bridges.
- 1 Special Permit for Expansion of Non-conforming at 6250 S. 112<sup>th</sup> Street; at PC 9-21

# Next Quarter “Rocks”

- Annexation of area from Pine Lake Road to Yankee Hill Road, 70<sup>th</sup> Street east to 84<sup>th</sup> Street
- Finalize changes to three Special Permits for additional requirements
- Continued support for County and 3-mile applications
- Track potential wind energy project in Otoe County
- Coordination with County Engineer on new 1+6 Roads Plan



# Annexation Area

Source: Esri, Maxar, Earthstar Geographics, and the G

# **Planning Department Quarterly Update**

**QUESTIONS?**