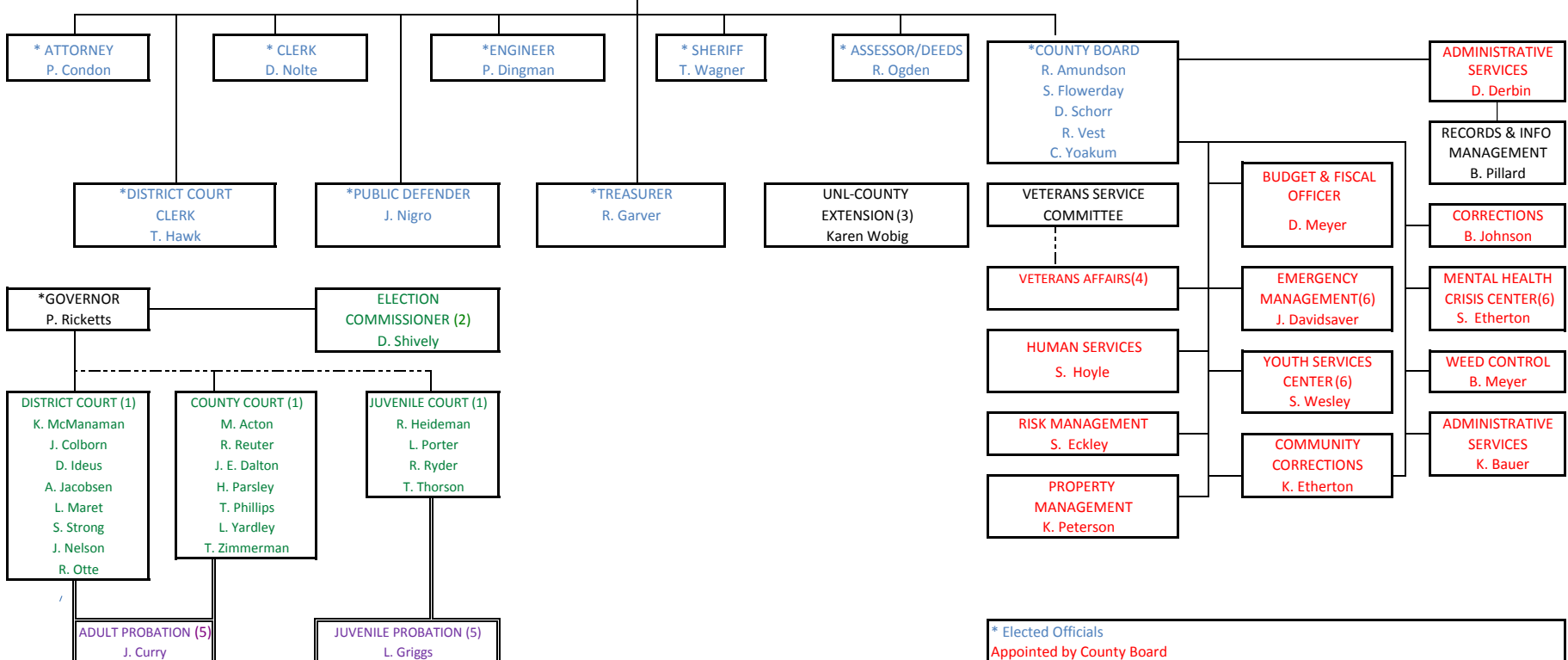


# LANCASTER COUNTY VOTERS



\* Elected Officials  
 Appointed by County Board  
 Appointed by Governor  
 Appointed by State Probation Administrator  
 (1) Appointed by Governor; retained by election  
 (2) Appointed by Governor; salary set by County Board  
 (3) University of Nebraska employee; facilities provided by County  
 (4) Appointed by Veterans Service Committee, subject to approval by County Board  
 (5) Appointed by State Probation Administrator, subject to approval by judges  
 (6) Agency Has Advisory Board or Committee