

# VILLAGE OF FIRTH LANCASTER COUNTY, NEBRASKA

THIS PLAT IS INTENDED TO SHOW AS ACCURATELY AS POSSIBLE THE RELATIONSHIP OF TRACTS OF LAND, BUT IT IS NOT INTENDED AS SURVEY ACCURATE IN ANY MANNER.

1 inch = 200 feet

Date: 4/15/2019  
J:\files\1\VillagePlatMXDs\Firth.mxd



51.45 ± Ac. Total  
0.61 ± Ac. Net

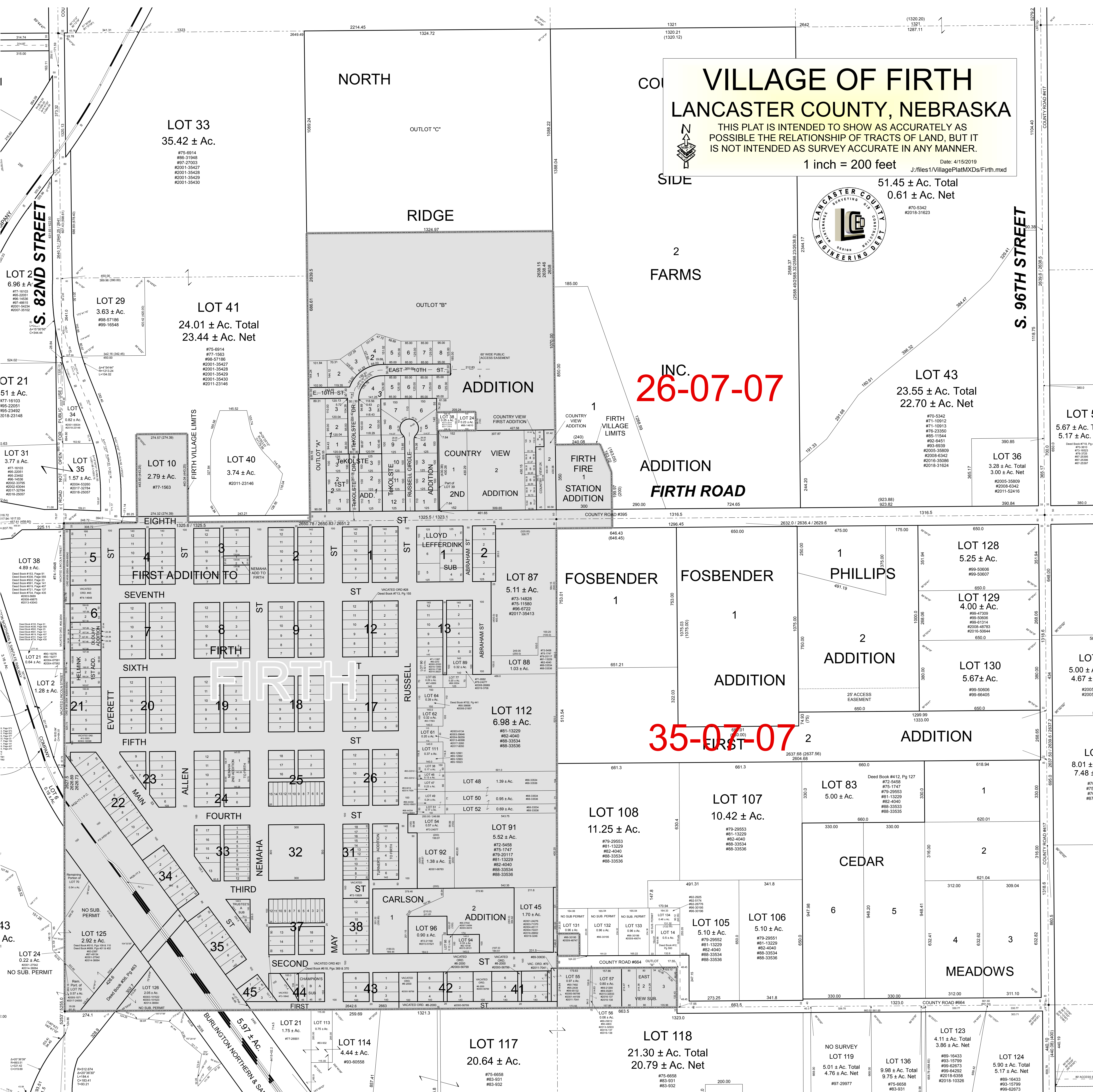
#70-5342  
#2018-31623

S. 96TH STREET

INC.  
**26-07-07**

ADDITION  
**FIRTH ROAD**

ADDITION  
**35-07-07**



LOT 33  
35.42 ± Ac.

LOT 29  
3.63 ± Ac.

LOT 41  
24.01 ± Ac. Total  
23.44 ± Ac. Net

LOT 10  
2.79 ± Ac.

LOT 40  
3.74 ± Ac.

LOT 38  
4.89 ± Ac.

LOT 21  
1.28 ± Ac.

LOT 23  
1.28 ± Ac.

LOT 24  
0.22 ± Ac.

LOT 125  
2.92 ± Ac.

LOT 126  
2.05 ± Ac.

LOT 21  
1.75 ± Ac.

LOT 114  
4.44 ± Ac.

RIDGE

ADDITION

ADDITION

ADDITION

ADDITION

ADDITION

ADDITION

ADDITION

ADDITION

ADDITION

ADDITION

FOSBENDER

FOSBENDER

FOSBENDER

LOT 108  
11.25 ± Ac.

LOT 105  
5.10 ± Ac.

LOT 106  
5.10 ± Ac.

LOT 117  
20.64 ± Ac.

LOT 118  
21.30 ± Ac. Total  
20.79 ± Ac. Net

LOT 43  
23.55 ± Ac. Total  
22.70 ± Ac. Net

LOT 36  
3.28 ± Ac. Total  
3.00 ± Ac. Net

LOT 128  
5.25 ± Ac.

LOT 129  
4.00 ± Ac.

LOT 130  
5.67 ± Ac.

LOT 83  
5.00 ± Ac.

LOT 107  
10.42 ± Ac.

LOT 109  
5.10 ± Ac.

LOT 110  
5.10 ± Ac.

LOT 105  
5.10 ± Ac.

LOT 106  
5.10 ± Ac.

LOT 123  
4.11 ± Ac. Total  
3.86 ± Ac. Net

LOT 124  
5.90 ± Ac. Total  
5.17 ± Ac. Net