

W. PANAMA RD.

8.64 ± Ac.

#79-13615
#81-4476
#88-17016
#2005-26596
#2013-29125

LOT 14
17.78 ± Ac. Total
17.11 ± Ac. Net

Deed Book #749, Page 40
#72-9398
#2002-88310
#2002-96468
#2015-32772

LOT 15
22.22 ± Ac. Total
21.90 ± Ac. Net

Deed Book #737, Page 3
#76-10821
#2006-36408
#2009-42679
#2017-21713
#2017-21714
#2017-21715
#2017-28843
#2017-28844

LOT 16
76.97 ± Ac. Total
76.02 ± Ac. Net

Deed Book #612, Pages 361 & 362
#70-2651
#76-10930
#83-15720
#94-50270
#95-6121
#95-6122
#2013-45746
#2019-8544

LOT 2
2.02 ± Ac.

Deed Book #263,
Pgs. 116 & 117

LOT 24
35.47 ± Ac.

Deed Book #393, Pgs. 71 & 72
Deed Book #500, Pgs. 437 & 438
Deed Book #679, Pgs. 203 & 204
Deed Book #700, Pg. 127
#70-2090
#81-3850
#88-14206
#92-1767
#92-14676

LOT 23
38.77 ± Ac.

Deed Book #393, Pgs. 71 & 72
Deed Book #500, Pgs. 437 & 438
Deed Book #679, Pgs. 203 & 204
Deed Book #700, Pg. 127
#81-3850
#88-14206
#92-1767
#92-14676

LOT 22
8.63 ± Ac.

Deed Book #687,
Pgs. 497 & 498
Deed Book #709,
Pg. 251
#73-12730
#77-2705
#77-2706
#81-5172
#81-3848
#90-18748
#2000-59750
#2005-49909
#2006-20627

SE 1/4, NW 1/4
37.70 ± Ac.
EXCL. R.O.W.

Deed Book #393, Pgs. 69 & 70
Deed Book #575, Pgs. 139 & 140
Deed Book #593, Pgs. 249 & 250
#88-14206
#92-1767
#92-14676

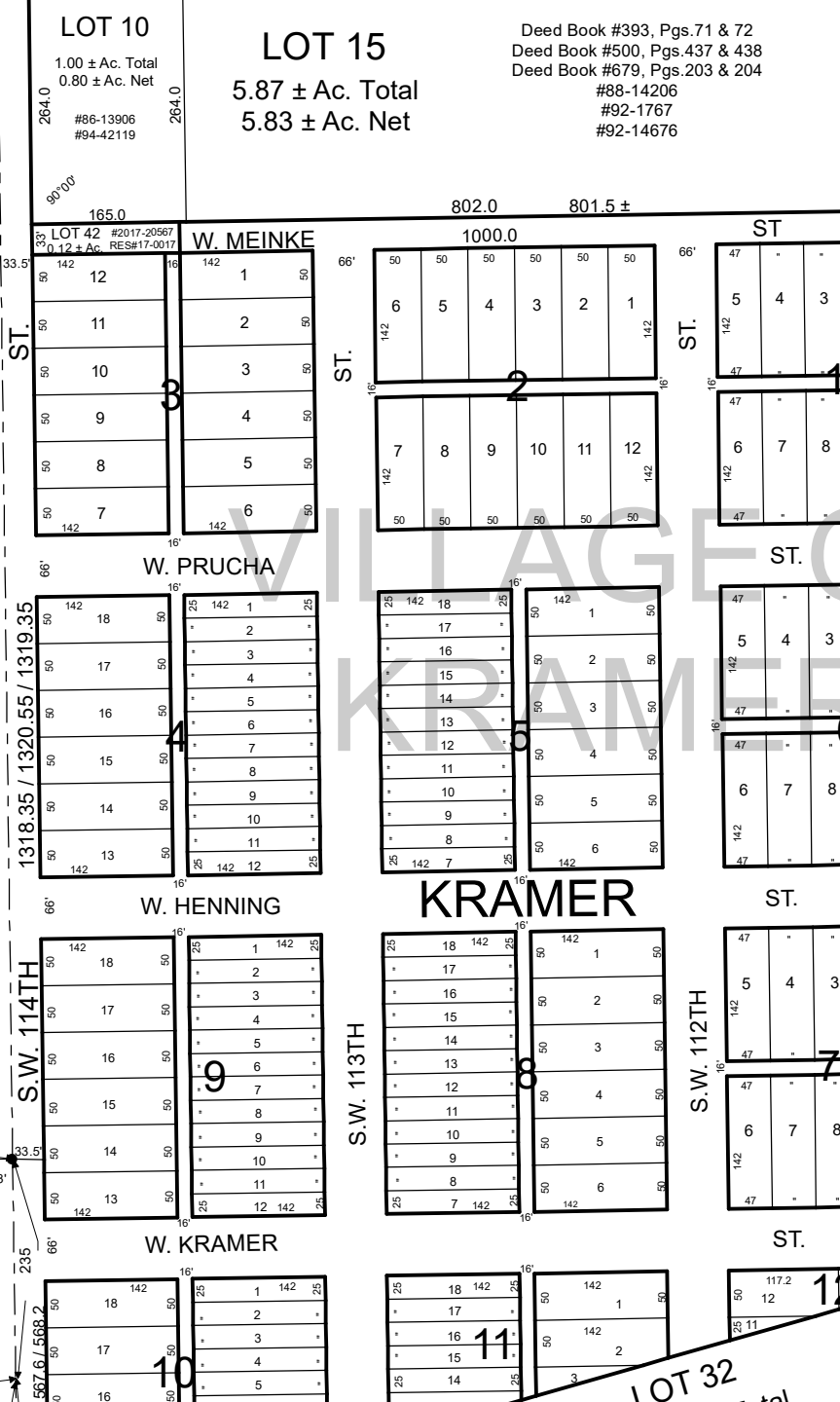
8-7-5

NO SURVEY
LOT 28
115.65 ± Ac. Total
114.88 ± Ac. Net

#2010-3149

NO SURVEY
LOT 23
10.21 ± Ac. Total
9.99 ± Ac. Net

#2004-39815
#2005-586
#2005-587
#2005-588



LOT 7
23.30 ± Ac. Total
22.85 ± Ac. Net

Deed Book #393, Pgs. 69 & 70
Deed Book #575, Pgs. 139 & 140
Deed Book #593, Pgs. 249 & 250
#76-24025
#88-14206
#92-1767
#92-14676

LOT 32
6.89 ± Ac. Total
6.77 ± Ac. Net

#80-32024
#80-22096
#92-58760
#93-17980
#93-58815

LOT 33
11.62 ± Ac.

LOT 6
0.58 ± Ac.

#80-32024
#80-22096
#92-58760
#93-17980
#93-58815

LOT 9
34.06 ± Ac. Total
32.99 ± Ac. Net

Deed Book #393, Pgs. 69 & 70
Deed Book #575, Pgs. 139 & 140
Deed Book #593, Pgs. 249 & 250
#76-24025
#88-14206
#92-1767
#92-14676

LOT 14
4.84 ± Ac. Total
4.09 ± Ac. Net

#70-2327
#82-10428
#85-51546
#2001-56119
#2001-56120
#2007-6224

LOT 12
75.69 ± Ac. Total
74.70 ± Ac. Net

Deed Book #393, Pgs. 69 & 70
Deed Book #575, Pgs. 139 & 140
Deed Book #593, Pgs. 249 & 250
#78-24025
#88-14206
#92-1767
#92-14676

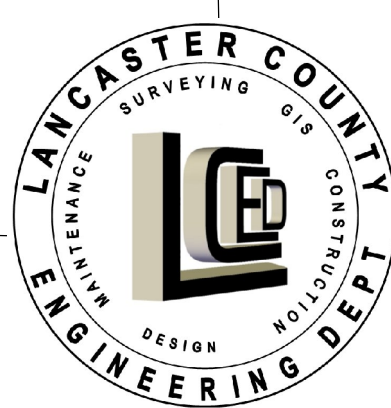
Village of Kramer LANCASTER COUNTY, NEBRASKA

THIS PLAT IS INTENDED TO SHOW AS ACCURATELY AS POSSIBLE THE RELATIONSHIP OF TRACTS OF LAND, BUT IT IS NOT INTENDED AS SURVEY ACCURATE IN ANY MANNER.

1 inch = 200 feet

Date: 10/30/2019

J:\files1\VillagePlatMXDs\Kramer.mxd



LOT 3
10.01 ± Ac. Total
9.87 ± Ac. Net

(1300.86)
(1300.7)
(1302.25)
1302.27

W. OLIVE CREEK RD.

LOT 1
2.79 ± Ac.

(1300.86)
(1300.7)
(1302.25)
1302.27