

STAGECOACH RD.

1318.21
1171.01
1135.96

LOT 111
10.16 ± Ac. Total
9.01 ± Ac. Net

#87-35462
#91-10505
#95-2223
#95-2708
#99-18720
#2007-37600

LOT 118
11.00 ± Ac. Total
10.69 ± Ac. Net

#97-5313
#99-18720
#2007-37600

LOT 119
60.54 ± Ac. Total
58.97 ± Ac. Net

#87-35462
#91-10505
#95-2223
#95-2804
#97-5313
#97-10429
#2005-11194
#2008-53618

NE 1/4, NW 1/4
42.64 ± Ac. Total
40.64 ± Ac. Net

#93-30571
#93-56296

LOT 30
29.75 ± Ac. Total
29.34 ± Ac. Net

#93-30571
#93-56296
#94-31558

VILLAGE OF PANAMA LANCASTER COUNTY, NEBRASKA

THIS PLAT IS INTENDED TO SHOW AS ACCURATELY AS POSSIBLE THE RELATIONSHIP OF TRACTS OF LAND, BUT IT IS NOT INTENDED AS SURVEY ACCURATE IN ANY MANNER.

1 inch = 200 feet

Date: 4/22/2019
J:\files1\VillagePlatMXDs\Panama.mxd

NW 1/4
42.54 ±
40.54 ±



Deed Book #376, pg. 309
Deed Book #540, pg. 157
Deed Book #674, pg. 287

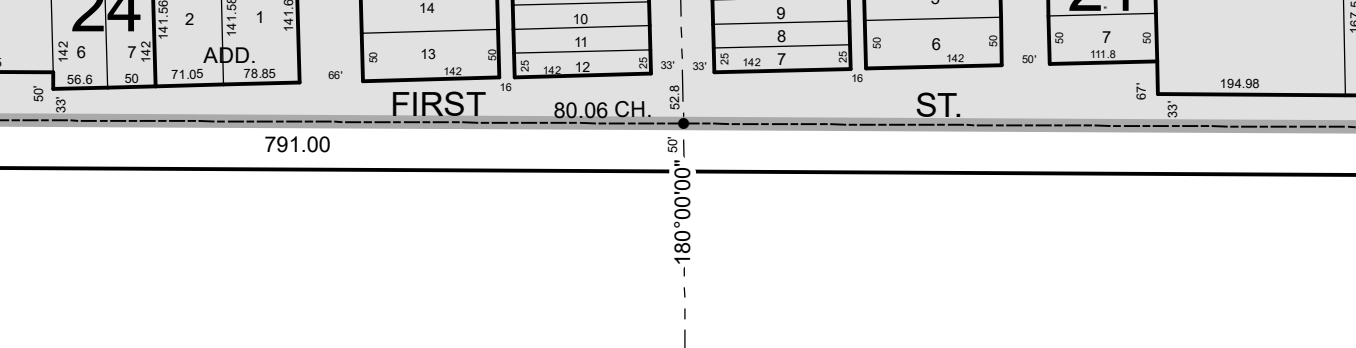
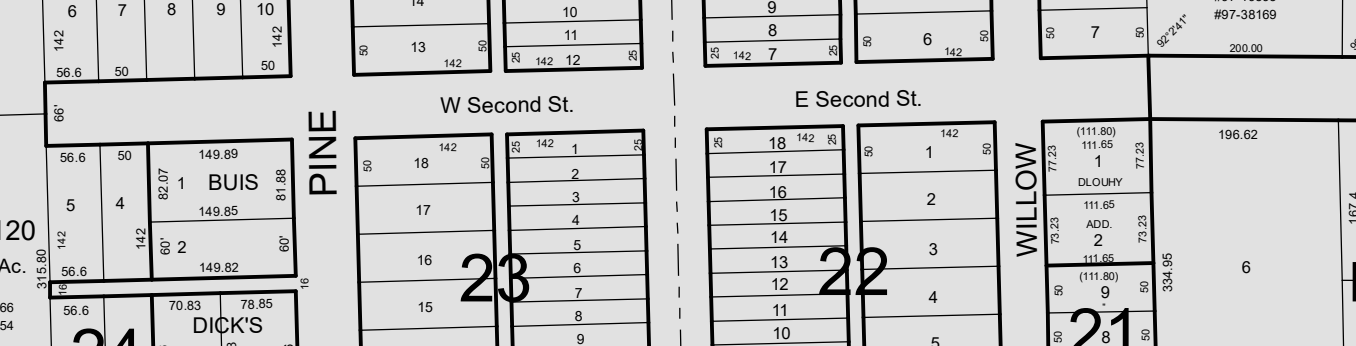
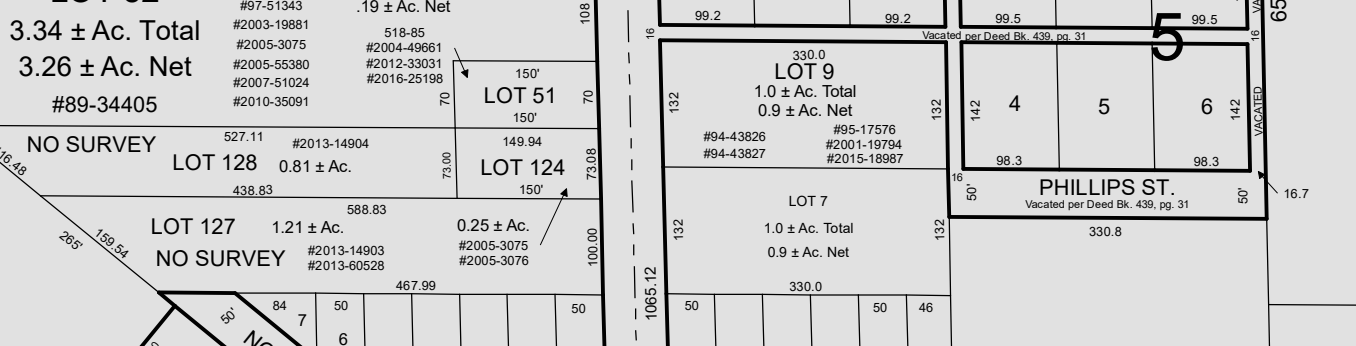
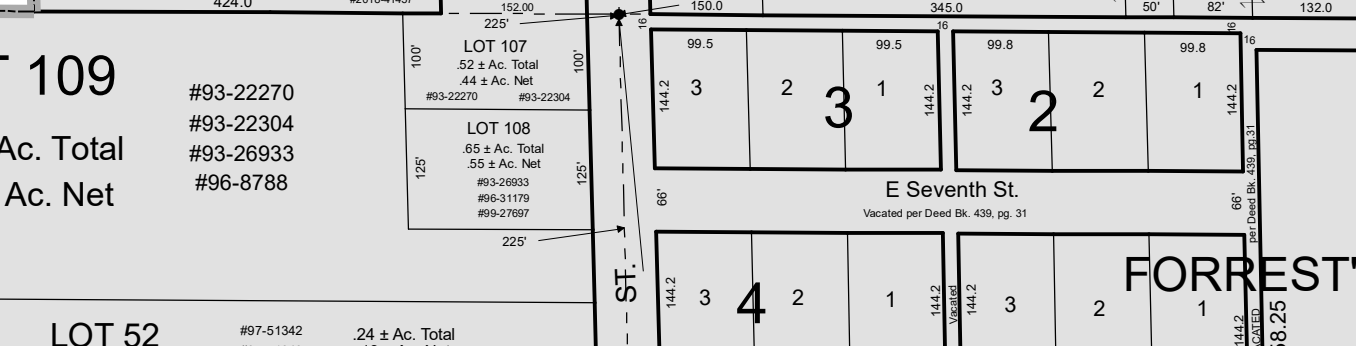
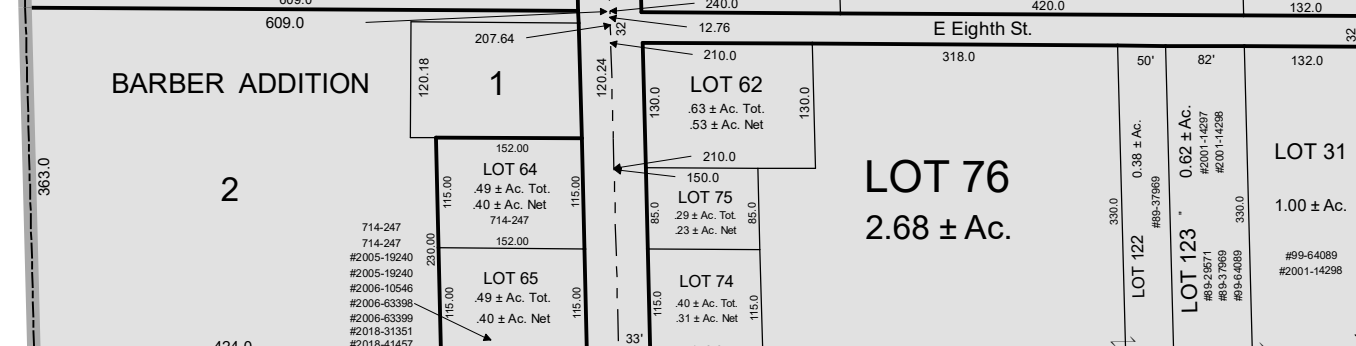
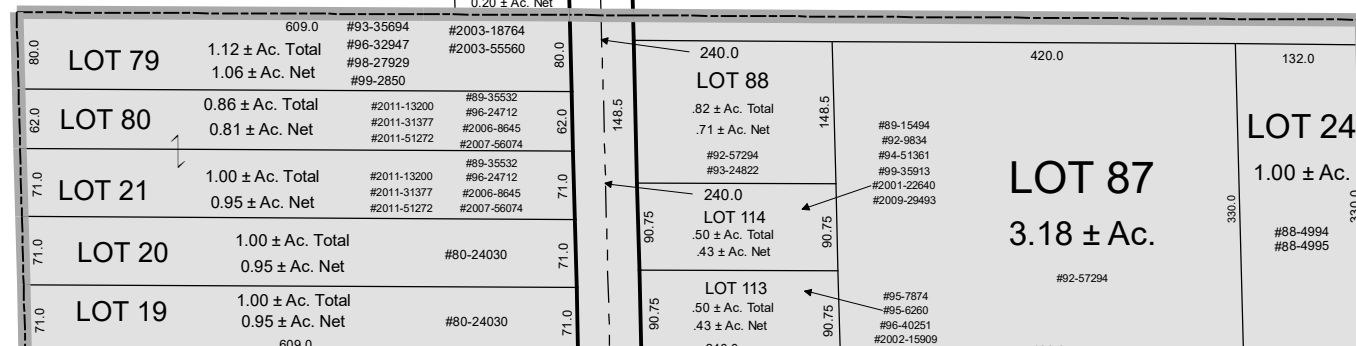


LOT 61
... ± Ac. Total
79.13 ± Ac. Net

Deed Book #635, pg. 577
#83-33039
#83-13839
#2013-59453
#2013-61726

LOT 33
24.00 ± Ac. Total
23.55 ± Ac. Net

Deed Book #540, pg. 157
Deed Book #565, pg. 211
Deed Book #674, pg. 287



LOT 54
36.85 ± Ac. Total
35.85 ± Ac. Net

#88-16700
#88-16701

LOT 132
13.26 ± Ac.

#87-30578
#88-14473
#88-29505
#2003-44651
#2014-11251
#2015-36609
#2017-35775

LOT 69
38.49 ± Ac. Total
37.53 ± Ac. Net

Deed Book #744, pg. 17
#2002-45544
#2011-44088
#2013-40436

LOT 131
2.29 ± Ac.

#94-28891 #2004-43129
#95-1899 #2014-2003
#96-3411 #2014-2400
#97-836 #2017-21821

LOT 110
4.33 ± Ac.

#86-44994
#86-44995

LOT 37
3.04 ± Ac.

#86-44994
#86-44995

LOT 121
3.61 ± Ac.

#97-34666
#99-32454

LOT 76
2.68 ± Ac.

#93-30571
#93-56296
#94-31558

LOT 32
4.00 ± Ac.

#99-64089
#2001-14298

LOT 66
38.16 ± Ac.

Deed Book #635, pg. 577
#2013-59453
#2013-61726

LOT 126
5.16 ± Ac.

#99-21693
#2009-376

LOT 83
11.31 ± Ac.

Deed Book #295, pg. 117
#2013-59453
#2013-61726

LOT 129
16.91 ± Ac.

#2013-62817
#2014-774

LOT 130
16.91 ± Ac.

#2013-62818

S. 148th St.
2 ± Ac. Total
15-45667
15-48743

PANAMA RD.

(1316') / 1314.95

2632.4 / 2631.2

791.00

180' 00" 00"

1786.00

2632.4 / 2631.2

1925.5

NO. 43

HIGHWAY

NEBRASKA

NO. 43

HIGHWAY

NEBRASKA

S. 162ND ST.

(NOT OFE
Remaining Portc

(RELC

LI
3.57
3.46

#97-33744
#91-6420
#97-10429
#2001-48809
#2016-17126

NO SURVEY
NO SUB PERMIT
LOT 19
1.40 ± Ac. Total
1.07 ± Ac. Net

(FORMER)
MO. PAC. R.R.

570.27
(566.8)

LOT 106
1.69 ± Ac. Total
1.42 ± Ac. Net

LOT 105
1.69 ± Ac. Total
1.42 ± Ac. Net

LOT 104
1.69 ± Ac. Total
1.42 ± Ac. Net

LOT 103
1.69 ± Ac. Total
1.42 ± Ac. Net

LOT 102
1.69 ± Ac. Total
1.42 ± Ac. Net

LOT 101
1.69 ± Ac. Total
1.42 ± Ac. Net

LOT 100
1.69 ± Ac. Total
1.42 ± Ac. Net

LOT 99
1.69 ± Ac. Total
1.42 ± Ac. Net

LOT 98
1.69 ± Ac. Total
1.42 ± Ac. Net

LOT 97
1.69 ± Ac. Total
1.42 ± Ac. Net

LOT 96
1.69 ± Ac. Total
1.42 ± Ac. Net

LOT 95
1.69 ± Ac. Total
1.42 ± Ac. Net

LOT 94
1.69 ± Ac. Total
1.42 ± Ac. Net

LOT 93
1.69 ± Ac. Total
1.42 ± Ac. Net

LOT 92
1.69 ± Ac. Total
1.42 ± Ac. Net

LOT 91
1.69 ± Ac. Total
1.42 ± Ac. Net

LOT 90
1.69 ± Ac. Total
1.42 ± Ac. Net

LOT 89
1.69 ± Ac. Total
1.42 ± Ac. Net

LOT 88
1.69 ± Ac. Total
1.42 ± Ac. Net

LOT 87
1.69 ± Ac. Total
1.42 ± Ac. Net

LOT 86
1.69 ± Ac. Total
1.42 ± Ac. Net

LOT 85
1.69 ± Ac. Total
1.42 ± Ac. Net

LOT 84
1.69 ± Ac. Total
1.42 ± Ac. Net

LOT 83
1.69 ± Ac. Total
1.42 ± Ac. Net

LOT 82
1.69 ± Ac. Total
1.42 ± Ac. Net

LOT 81
1.69 ± Ac. Total
1.42 ± Ac. Net

LOT 80
1.69 ± Ac. Total
1.42 ± Ac. Net

LOT 79
1.69 ± Ac. Total
1.42 ± Ac. Net

LOT 78
1.69 ± Ac. Total
1.42 ± Ac. Net

LOT 77
1.69 ± Ac. Total
1.42 ± Ac. Net

LOT 76
1.69 ± Ac. Total
1.42 ± Ac. Net

LOT 75
1.69 ± Ac. Total
1.42 ± Ac. Net

LOT 74
1.69 ± Ac. Total
1.42 ± Ac. Net

LOT 73
1.69 ± Ac. Total
1.42 ± Ac. Net

LOT 72
1.69 ± Ac. Total
1.42 ± Ac. Net

LOT 71
1.69 ± Ac. Total
1.42 ± Ac. Net

LOT 70
1.69 ± Ac. Total
1.42 ± Ac. Net

LOT 69
1.69 ± Ac. Total
1.42 ± Ac. Net

LOT 68
1.69 ± Ac. Total
1.42 ± Ac. Net

LOT 67
1.69 ± Ac. Total
1.42 ± Ac. Net

LOT 66
1.69 ± Ac. Total
1.42 ± Ac. Net

LOT 65
1.69 ± Ac. Total
1.42 ± Ac. Net

LOT 64
1.69 ± Ac. Total
1.42 ± Ac. Net

LOT 63
1.69 ± Ac. Total
1.42 ± Ac. Net

LOT 62
1.69 ± Ac. Total
1.42 ± Ac. Net

LOT 61
1.69 ± Ac. Total
1.42 ± Ac. Net

LOT 60
1.69 ± Ac. Total
1.42 ± Ac. Net

LOT 59
1.69 ± Ac. Total
1.42 ± Ac. Net

LOT 58
1.69 ± Ac. Total
1.42 ± Ac. Net